

QNEWS Q DIGITAL

A Quest Publication

Issue 24

February 2022

A Note From the President

Hello Quest Members, Our hybrid Spring semester has gotten off to a terrific start, with encouraging attendance both in person and on Zoom.

Our finances continue to be robust and our Summer Encores program is filling out. Remember to email your recommendation for a summer reprise, including course, subject, and presenter, to **Art Spar** at QuestEncores2022@googlegroups.com.

Our coffee lovers have already tested the new coffee service adding flavor to our pre-class morning conversations.

And we look forward to some RSVP'd luncheons this spring — one in the Quest lunchroom on Thursday, March 10th and an end of the year luncheon on Friday, May 13th at a restaurant to be determined. Details will follow on both events.

Our Long-Range Planning Committee has been busy discussing the functioning of our organization. If you'd like to make written suggestions, contact the Chair, **Nan McNamara**, at marynanmcnamara@gmail.com. We are also planning to form small discussion groups for members to share their opinions in person on the current and future workings of Quest.

More specific information on these groups will be forthcoming.

And let's not forget our approaching elections. The Nominating and Elections Committee has lined up an exciting slate of candidates. If you are interested in running, please contact NEC Chair **Mary Beth Yakoubian** at ykoubian@opontine.net.

A heartfelt word before closing — many thanks for your courtesy during presentations and for keeping your Quest emails concise and considerate. Looking forward to seeing you soon.

— Ruth Ward

Fall Semester 2022 Announced

Giving us plenty of time for personal and academic planning, Council has approved our calendar for the Fall semester, which will run from September 6 to December 15, 2022.

September 5: Monday, Labor Day, no classes

September 6: Tuesday, first day of Fall semester classes

September 26–27: Monday and Tuesday, Rosh Hashanah, no classes

October 5: Wednesday, Yom Kippur, no classes

October 10: Monday, Columbus Day, no classes

November 9: Wednesday, General Meeting 1:00–2:30 pm as a hybrid

November 24–25: Monday–Thursday, week of Thanksgiving, no classes

December 15: Thursday, last day of Fall semester classes

Fall B-Week Guest Speakers: Sept 14, 28, Oct 12, 26, Nov 30, Dec 14

Quest's Scheduling Committee

by QNews Staff

We have a question for you: Who has the hardest job at Quest? Now we fully realize that the answer is surely subjective, but we'd like to put forth our selection: *The Scheduling Committee*, comprised of **Steve Allen**, Chair, and **Sandra Abramson**, **Linda Downs**, **Bob Gottfried**, and **Laura Lopez**.

You see, this is the one committee that is virtually guaranteed to make some members of Quest unhappy each and every semester. *"Why did you put my class on Tuesday afternoons?" "I can't possibly get to Quest on a Thursday morning!" "I'm up against 'Foreign Affairs!' That's not fair!"* Etc. etc. etc. Who was it who said that you can't please all the people all the time? They may have been talking about the members of our Scheduling Committee! Let's meet them, and thank them for practically performing miracles in trying to keep everyone happy, semester after semester.



Steve Allen was born in Brooklyn, grew up in Queens (Martin Van Buren High School), and has lived in Manhattan's Upper West Side for over 50 years. This has allowed him to indulge a life-long fascination with theater, dance, and other performing arts. His first career was in banking, building mathematical models and managing risk, and his second career was in teaching mathematical finance at NYU. In his 14 years at Quest he has had the opportunity to create and teach in a wide variety of courses, as well as to help the Quest administration, serving as Treasurer, a Council member, and on several committees. And he has frequently assisted his wife, Quest member Caroline Thompson, in the creation of history courses.



Sandra Abramson, spent her first 18 years in Philadelphia, the land of the Lenni Lenape, and graduated from the Philadelphia High School for Girls. She attended Clark University in Worcester, MA, and graduated with an AB in psychology, minor in philosophy. In 1968, she moved to New York, where she attended several graduate schools, including some time at Rutgers Law School. In 1977, she started working in the field of community development, focusing on the development, renovation and management of affordable housing. She was Director of Housing for the St. Nicks Alliance in Williamsburg, Brooklyn. She later became Director of Rehab Programs at the NYC Department of Housing Preservation and Development, overseeing its not-for-profit programs. For twenty years, from 1994 through 2014, she was a consultant with affordable housing organizations in New York, New Jersey and Philadelphia, assisting them with the development, property and asset management of their properties. And, finally, after living in Brooklyn for over forty-six years, Sandra "decamped" to the Upper West Side in 2016, to be nearer to her favorite space, Alice Tully Hall!



Linda Downs was born and raised in the motor-city of Detroit, and received an MA in the History of Art from the University of Michigan. She worked at The Detroit Institute of Arts, The National Gallery of Art and, as director, oversaw the construction of the The Figge Art Museum, in Davenport, Iowa, designed by David Chipperfield.

Linda became a New Yorker in 2006 when she headed up the International Learned Society, College Art Association. And, she has published a book on the Diego Rivera Murals at the Detroit Institute of Arts, which happily has had a continual reading audience since its publication in 1990.

This is Linda's third semester on the Scheduling Committee, and her fourth year at Quest. She has always liked a challenge — and the work of the Scheduling Committee provides just that! As Linda says, "The breadth of courses and dedication and preparation of presenters always amazes me."



Bob Gottfried was born in Brooklyn, raised in Valley Stream, LI, and graduated from SUNY Albany and the SUNY Law School in Buffalo. For over forty years, Bob worked in the field of immigration law, representing individuals and corporations in complex immigration cases. He was a partner in two small law firms, before joining Hodgson Russ as a partner in their New York City office, and then setting up his own practice. The last two years of his career were spent transitioning his practice to his son David. Bob has been happily married to Quest member Ellen for 45 years. They are both very proud of their three sons and two grandsons (aged four and two).

Bob joined Quest as a part-time member in the Fall of 2014, was elected Vice-President in the Spring of 2016, and served as President from 2017-2021. He is currently a member of both the scheduling and curriculum committees.



Laura Lopez, born in Manila, she spent her childhood in Forest Hills, then moved to France, finishing high school at the American School of Paris. She returned to Manila, graduating with a degree in Foreign Service, and later obtained an MBA from Baruch. Laura spent her professional life in New York, engaging in advocacy for children at UNICEF, working at small nonprofits on partnerships for social change, grant writing, and microfinance — improving livelihoods in poor communities in concert with local organizations in the Philippines.

She joined Quest in 2019, volunteering for the coffee committee, and later preparing the bi-weekly Next Week at Quest schedules through spring 2021. Last fall she joined the Scheduling Committee to gain another perspective on Quest classes and understand the issues involved. In February she made her first presentation at Quest, on the Nobel Peace Prize.

CultureQuest Tour: Murals and Mosaics of Spanish Harlem

by Renee Woloshin

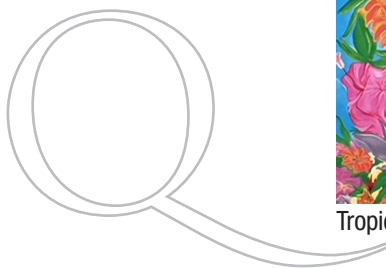
On Friday, February 11th a group of Questers experienced a fascinating virtual walking tour of the murals and mosaics of Spanish Harlem. The tour was led by official NYC tour guide Leigh Hallingby, who adapted this virtual version from her in-person tour.

Leigh showed slides and provided interesting commentary on the murals, some of which are painted to resemble mosaics. The murals can be found on the sides of apartment buildings, churches and businesses in the area from 100th Street to 111th Street, between Lexington and Third Avenues.

We learned about the themes expressed in these works and the symbolism they contain. Some depict figures from the music world, such as singer Celia Cruz and musician Tito Puente. Others represent political themes such as the powerful mural of Pedro Albizu Campos and Che Guevara. There are murals showing lovely tropical scenes of the islands where many residents of Spanish Harlem have their roots.

One of my favorites among the works we saw is a striking mural of Frida Kahlo and Julia de Burgos holding hands in solidarity. It is an homage to Kahlo's well-known self-portrait, "The Two Fridas."

Questers at the tour were delighted to discover that these amazing works of art exist in NYC in a neighborhood we may not know well, but is easy to reach. We were inspired to see the murals in person, on our own or perhaps on Leigh's in-person walking tour of Spanish Harlem (harlemwalks.com).



Singer Celia Cruz



Pedro Albizu Campos and Che Guevara



Tropical Scene of the Islands

Creative Corner

It's A Puzzlement by Betty Farber

With sharpened pencil in my room,
I meet my family group on Zoom.

Each week I join this grand event:
A crossword that's a puzzlement.

I love to solve a Shakespeare clue
Like, "eye source in a witch's brew."

The hint might be a funny one:
A far-fetched joke, a rhyme, a pun.

I want to give a word of thanks
For clues where you must fill in blanks.

But I'm not filled with great elation
When I must know a whole quotation.

Don't get upset. That's just absurd!
You must express not one Cross Word!

Q News Staff

A Quest Publication

Editor-in-Chief
Barbara Gelber

Consulting Editors
Michael Wellner
Margaret Woodward

Editor Emerita
Carolyn McGuire

Graphic Design
Robbii

Humor Contributor
Lowell Berman

25 Broadway
New York, NY 10004
212.925.6625 x229
questlifelong.org

Read These Out Loud

"How to Write Big Books"
by **Warren Peace**

"The Lion Attacked"
by **Claude Yarmoff**

"The Art of Archery"
by **Beau N. Arrow**

"Songs for Children"
by **Barbara Blacksheep**

"Irish Heart Surgery"
by **Angie O'Plasty**

"Desert Crossing"
by **I. Rhoda Camel**

"School Truancy"
by **Marcus Absent**

"I Was a Cloakroom Attendant"
by **Mahatma Coate**

"I Lost My Balance"
by **Eileen Dover and Phil Down**

"Positive Reinforcement"
by **Wade Ago**

"Shhh"
by **Danielle Soloud**

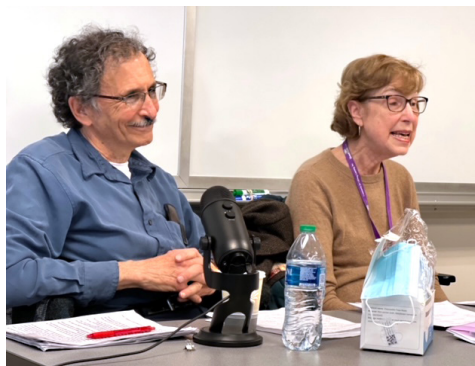
"The Philippine Post Office"
by **Imelda Letter**

"Stop Arguing"
by **Xavier Breath**

**In recognizing
the humanity of our
fellow beings,
we pay ourselves
the highest tribute.**

— Former US Supreme Court Justice
Thurgood Marshall, who was the
first African American judge to
serve on the high court bench.

At 25 Broadway



Top: So nice to be back in person with **Sandy Kessler** and **Lynnel Garabedian**.

Right: **Marion Schultheis** making coffee. Am sure all coffee lovers say "Thank Goodness!" Notice the foot stool.



Who's Doing What



Arlynn Greenbaum had a nice reprieve from the New York City winter in mid-January visiting **Gale Spitalnik** at her beautiful, ocean-front rental apartment in sunny Hollywood, Florida. Here they are at the Margaritaville Hotel taking a break from walking the boardwalk.

Deborah Yaffe has been on an Agatha Christie kick. The Hercule Poirot television series with David Suchet is available on YouTube. The audiobooks are also available on YouTube and they are addictive. It's nice

to listen on YouTube because you don't need a device and you can listen while doing other things. Deborah really believes Agatha Christie is a vastly underrated writer; the books are much better than the stereotype of the lightweight "Agatha Christie" book.

...



Linda Rothstein taught herself how to use "Procreate," a computer artist app. This is her first collage ever, which never would have happened if it hadn't been for Covid. Linda reports, "I can't stop. This is addictive. Better than raiding the refrigerator."

...

Games We Played

by Betty Farber and Lucille Granfort

What were the games you played when you were a child? I remember losing myself in the drama of Ringalevio or the fun of Mother May I? We found many games in our research. We each remember a favorite. **Why not send in a description of *your* favorite game to be printed in a future issue of QNews?**

Hopscotch or Patsy:

Use chalk to draw on the sidewalk a grid in a hopscotch pattern. Number the squares from one to ten. Toss a marker — usually a rock or a penny— onto the grid, aiming for Square One. Hop to the rock, pick it up, turn around and hop back to the start. Now toss the rock onto Square Two. If possible, continue to square 10. This game is played with multiple players, and your turn would be over when you miss the number you were aiming for.

• • •

Ringalevio:

A bench or stoop is used or a circle is drawn in chalk and designated the “jail.” One team runs away and hides, while the other team hunts them down. A hiding player is apprehended when he is seized and held in the jail, which is guarded by a member of the seeking team. At any time, however, a daring member of the hiding team can free the prisoners by dashing into the jail and shouting “Home free all!” Now the freed group is back in the game. This game has been popular in New York City since at least the 1920’s.

• • •

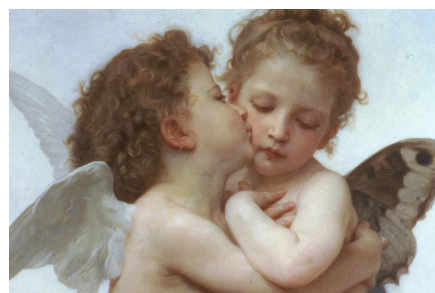
Mother May I?:

One player is the “mother.” “Children” face her at a distance. Mother says to first child, “You may take three giant steps” Or “You may take five baby steps, etc.” Child must say, “Mother May I?” or child must go back to beginning space. Also mother may say, “No, you may not!” The first child to get to where mother is standing, wins.

• • •

Red Light Green Light:

Leader stands at a distance, facing players. Leader says “Green Light” holding a green GO sign. Suddenly says, “Red Light,” holding a red STOP sign. Anyone still moving must go back to the starting line. New game starts when all players get across finish line.



Kissing Games

Post Office:

There are two groups: one of boys and one of girls. One group goes into another room called the Post Office. A member of the other group visits the Post Office. They get a kiss from everyone in the room, then go back to the original room. All get a turn. Then the other group sends members to the first room and all is repeated.

• • •

Spin the Bottle:

Players sit in a circle. One member spins a bottle. The spinner must kiss the person to whom the bottle points when it stops spinning.

• • •

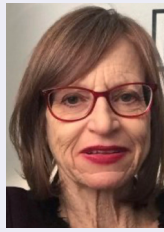
Meet Some New Members



Gail Green born, bred, and educated in New York and New Haven, and trained in architecture offices, has been active in the design / architecture field for more than thirty years. Her work has been published in *Architectural Digest*, *House Beautiful*, *The New York Times Magazine*, and numerous other interior design books. She has lectured on topics ranging

from Interior Design for Art Collectors to small space science. Gail has appeared on NBC’s *Designer Living* and CNN’s *Style with Elsa Klensch*. She has been a featured designer in the prestigious Kips Bay Decorator Show House and is the author of “An Insider’s Guide to Interior Design.”

Gail holds advanced degrees in literature and rare books and writes on an array of subjects, including art, antiques, food, wine and luxury goods. A devoted Francophile, she is interested in french cinema, cinema in general, photography, art galleries, poetry, Cole Porter, and most everything from the 30’s.



Ellen Pober Rittberg is a retired attorney, a playwright, and an award-winning former journalist whose essays and features have appeared in *The New York Times*, *Reader’s Digest* and *HuffPost*. Ellen’s three published books are *Why is Grandma Naked?* *Caring for Your Aging Parent*; *He is Walking Wider*; and *35 Things Your Teen Won’t Tell You*,

So I Will. Her plays have been performed on New York stages. She just finished a novel and is working on her next poetry book and a memoir about family secrets.

Ellen is a Brooklyn-born native New Yorker who spent most of her life on Long Island. She moved back to Brooklyn six years ago. She’s divorced and has three wonderful children and four grands who live locally. Before Covid, Ellen lectured about creative writing on cruise ships. She is a birder. She is thrilled with Quest and its wonderful members.